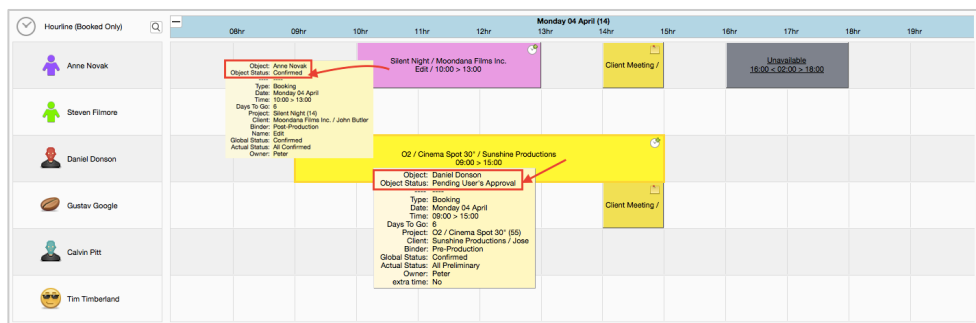


In this release you'll find a nice set of 53 new Features (8 HOT Features), 16 Bug Fixes and 8 Other Important Changes. The 8 hot features and other selected ones are highlighted below.

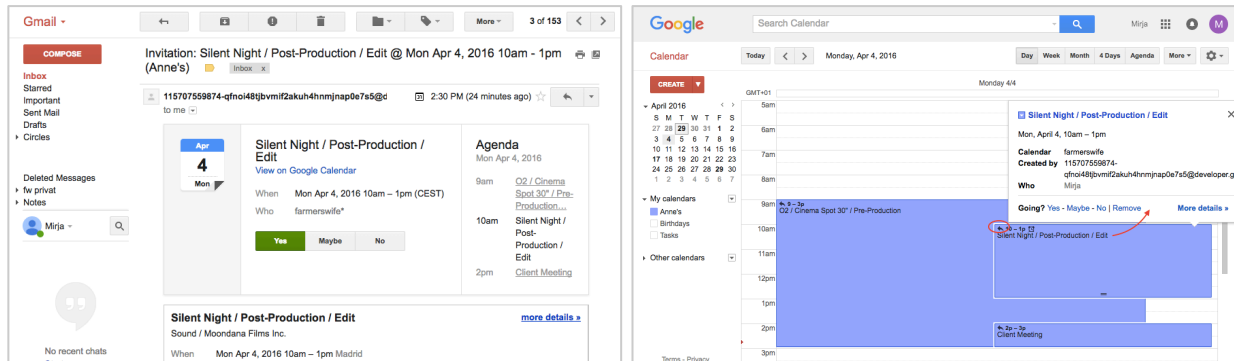
The full list of over 300 logged changes since v6 can be accessed on our website farmerswife.com/releasenotes/

You love your Google Calendar? Let me invite you.

The Google Invite integration triggers event invitations (if enabled in Gmail) for Tasks and Project Bookings to be sent out to Resources, Clients and Users who have a Gmail address assigned. The events will be shown in the Users local time zone of his / her calendar, thus converting from the farmerswife server time to the local time.



Recipients can open and view an event invitation in their Google Calendar, and then accept or decline the event invitation. This will feed back to farmerswife and update the Object's status accordingly. Moving and modifying the event triggers a change notification just like in Google, requesting another accept/decline from the invited person.



From planning to delivery. Just press a button and GO!

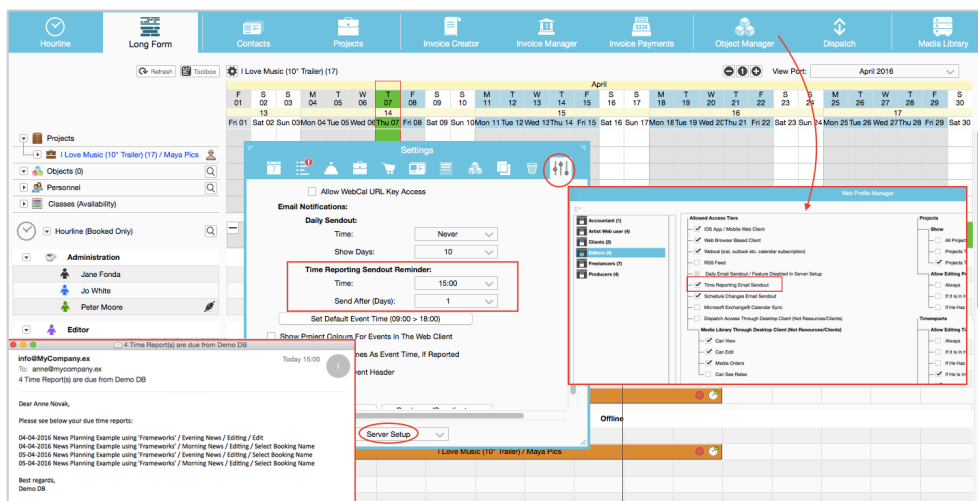
Sync your Adstream Delivery orders with your farmerswife, for easy asset tracking and billing. Only enter your metadata in one place.

The Adstream Platform connection will take care of the rest. farmerswife will notify users of upcoming Airdates, in good time to deliver Master files. You'll always have logs of file transfers for your orders, right along with all the other data from them. Your MO's will automatically update according to the Adstream Delivery status.

For more information visit: <http://www.farmerswife.com/adstream>

Get on with your Time Reports.

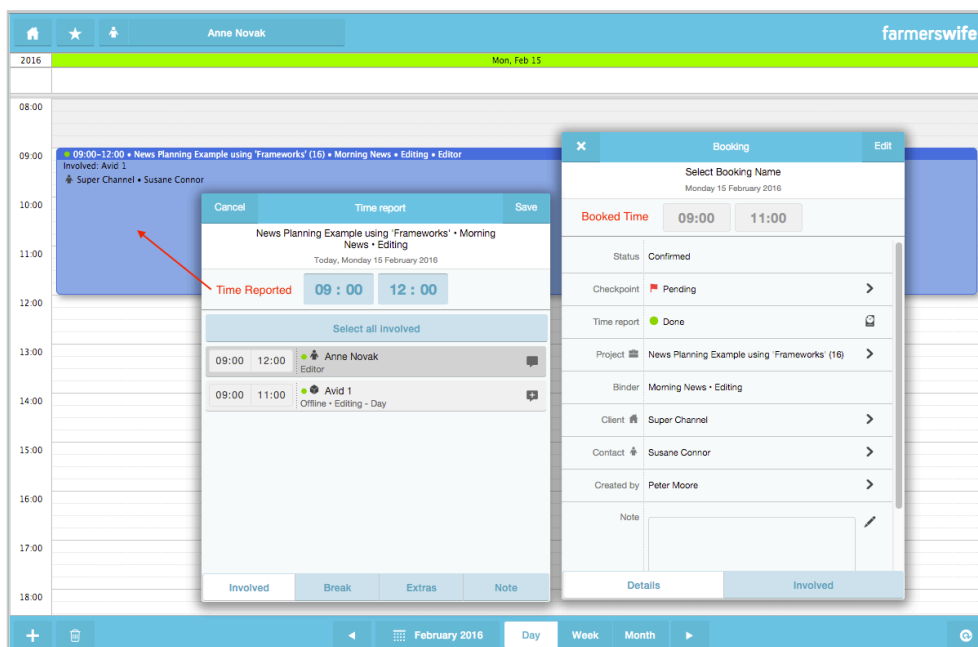
Having trouble getting your artists and operators to fill in their Time Reports? Now you can setup a customized reminder email that is automatically sent at a specific time each day and lists all the pending Time Reports!



In addition we added a new "Server Setup" setting in the Toolbox to "Open Bookings On Involved Tab In The Web Client, iOS and Mobile Web", so when Users log in, they are immediately directed to the Time Reports lists before seeing or accessing their schedule.

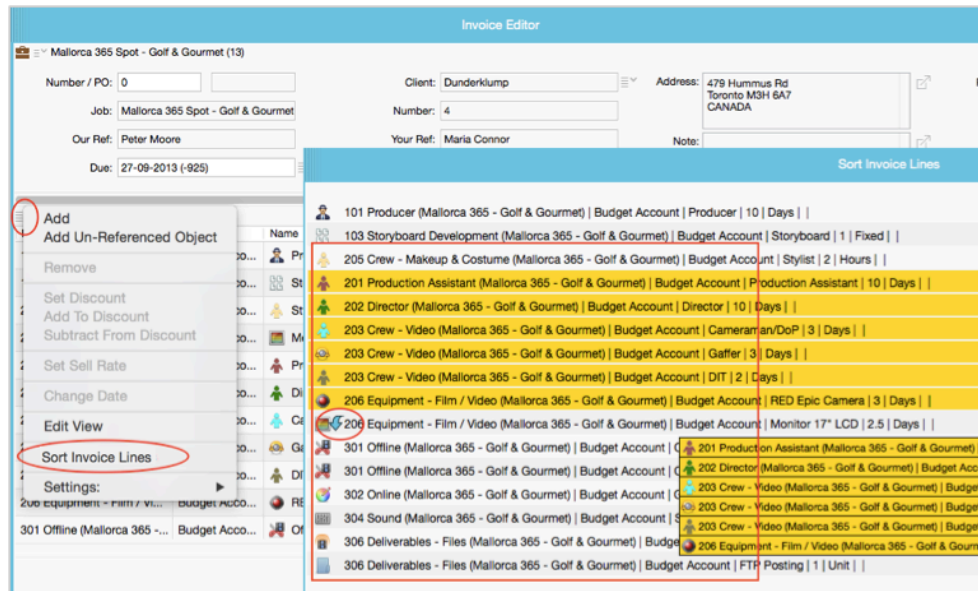
Curious to see how busy you've been? Show Time Reported Time in Web and iOS.

Always wanted to see how busy you were? Now in the Web Access Tiers, you can allow your operators to see the Time Reported Time. As soon as they've reported a Booking, it will 'update' to the reported time.



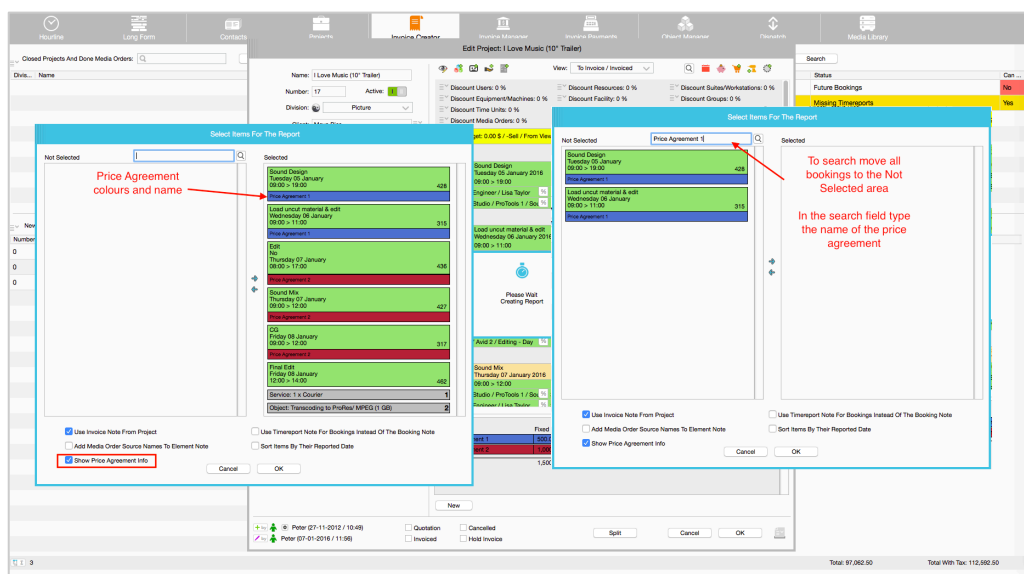
Invoice Editor Improvements

Though it may not seem obvious it can be nice to see both the Object's Buy and the Buy Row Rate in the Invoice Editor window. This is now possible in the "Edit View" menu. Also, we've extended the Invoice line sorting, allowing you to select, then drag & drop multiple lines for more flexible invoice layouts.



Lost when Part Invoicing or working with large projects? Find this...

You'll love the new search option. It allows you to either search by Booking name, Price Agreement, Date or Month name. The filtered Bookings can then be easily moved to the 'Selected' area with one click on the blue arrow pointing to the right.



When using Price Agreements, it's recommended that you enable the new "Show Price Agreement Info" checkbox located at the bottom left corner. This way the "Sources" will show the color of the Price Agreement(s) at the bottom.

We also optimized creating and modifying Invoices with many line items; it's now 50% faster!

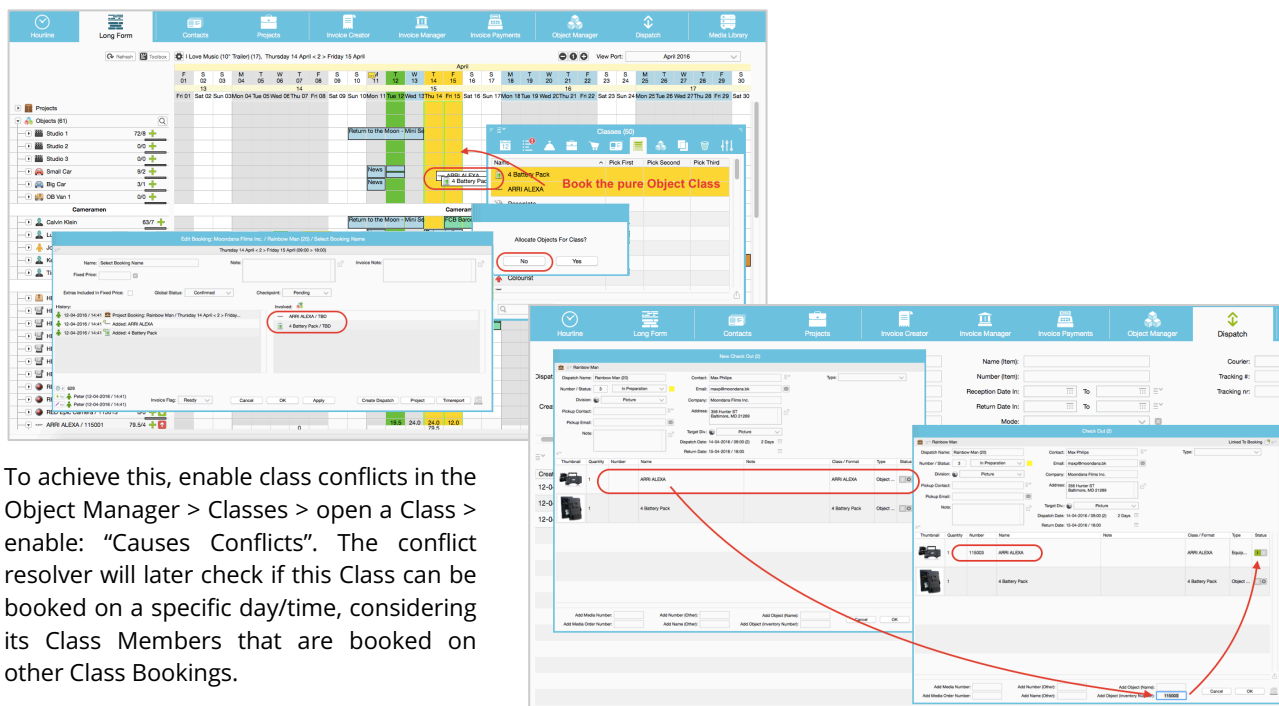
Need to update a bunch of Objects? Easily done with the Exporter/Importer.

Check out the extended Object Importer! Featuring full Object Export/Import of Object Classes, Activities, Resources and much more. It's never been easier to update your Rates, Object Setup or add more Equipment to your database.

For a detailed explanation, please look up the updated Object Manager Manual at support.farmerswife.com.

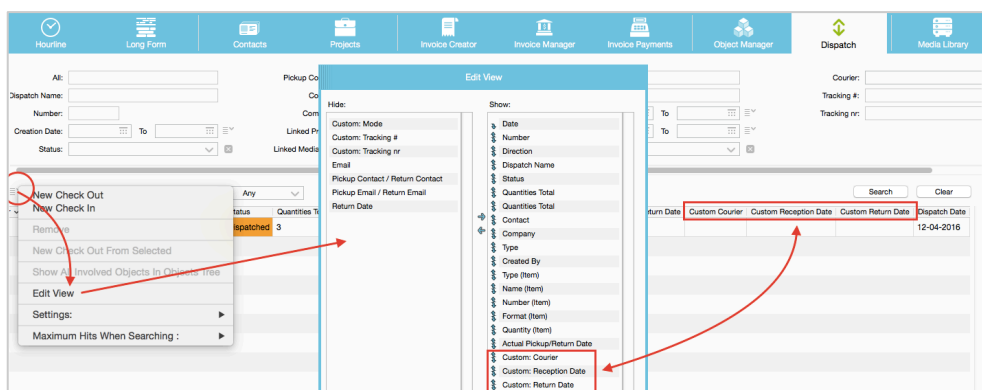
Using EMT? Then you'll like our latest improvements.

It's finally possible to **dispatch a pure Object Class** from a Class Booking, so that later, at the point of actually packing and scanning the equipment, **the booked and dispatched Class can be swapped with an available Class Member** (the one that was actually picked in the warehouse). This way you can avoid getting conflicts at an early stage and you don't need to pick the initially booked item at the point of scanning and dispatching.



To achieve this, enable class conflicts in the Object Manager > Classes > open a Class > enable: "Causes Conflicts". The conflict resolver will later check if this Class can be booked on a specific day/time, considering its Class Members that are booked on other Class Bookings.

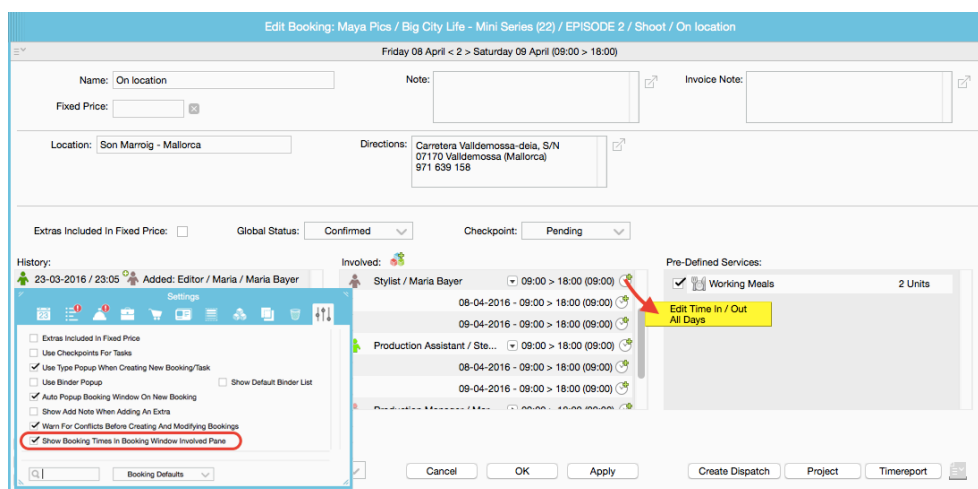
Also now you can see all **Dispatch Custom Fields** in the **Dispatch window**, by adjusting the "Edit View" options.



Finally it is now possible to copy Objects of a Check Out and paste them into a new Check Out, by using the new **"Copy To Objects Clipboard"** and **"Paste From Objects Clipboard"** functionality. This is useful for large productions to prep equipment needed for another shoot on a different Project in the future.

Managing a complex schedule?

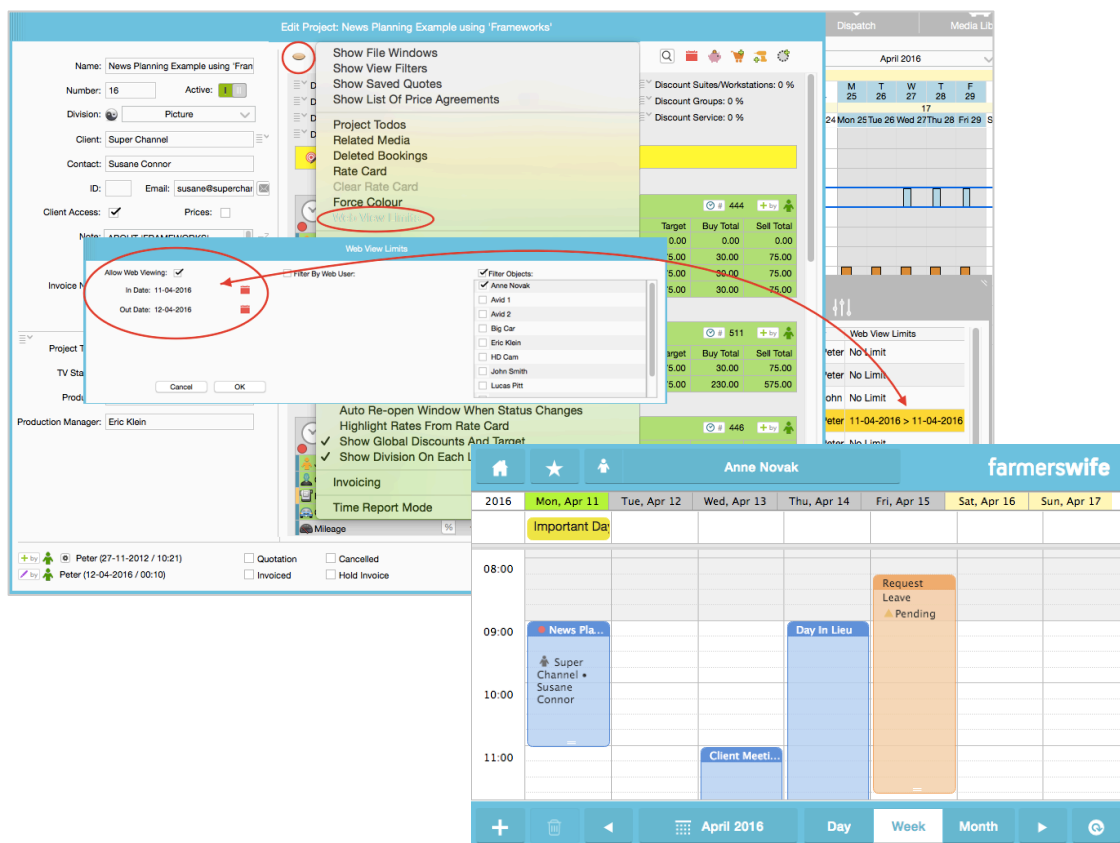
Enable the new Time In/Out Editor in the Booking Window to easily change the in or out times on individual Involved Users or Objects on a day-by-day basis directly from within the Edit Booking > Involved window.



Just click on the Booking/plus icon and edit the times. To enable this option go to your Toolbox > Settings > Booking Defaults.

Working with a big pool of Freelancers and planning ahead? Hide a Schedule until it's ready to be released.

With the Web View Limits, you can now hide the schedule on a Project basis, for all or certain involved Users, for the entire Project or a certain time range. Access the Web View Limits through Long Form > Projects > display the Project > click Project icon or open the Project and click the Eye menu > Web View Limits.



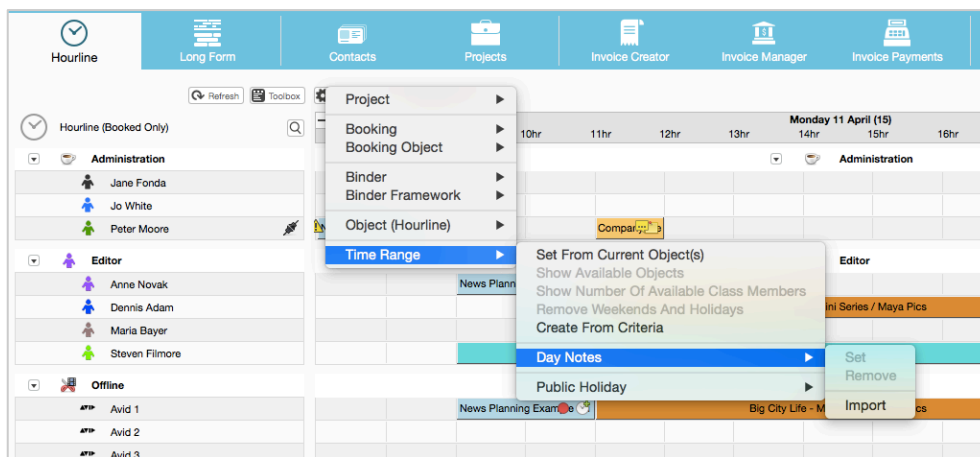
Searching for Projects with Budgets or Quotes?

We've now added new search options to the Advanced Project Search allowing you to filter Projects by Budget type, as well as being able to filter by active/non-active Budgets.

This allows more specific input collection for reports—for example, what you've quoted vs. won deals.

Have some important notes to share? Import a list of Day Notes.

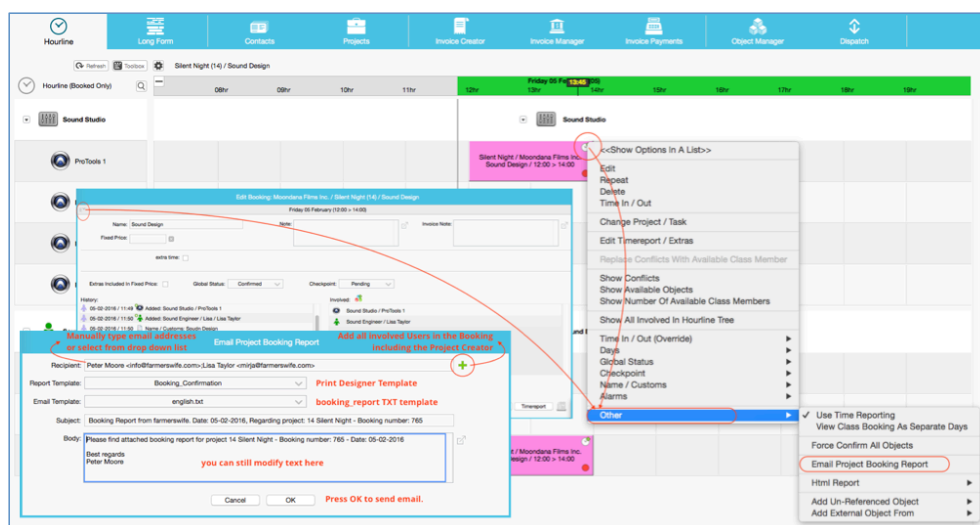
With the new Day Notes Import function you can easily import multiple Day Notes from a CSV file. The Day Notes are prominently displayed in the Web Access Tiers and shown with a mouse over in the Desktop Application. Try it out!



More info on how to import can be found at support.farmerswife.com, look for "Day Note Import."

Sending your call sheets or booking confirmations has never been easier!

We've now added the Contact type Resource to be available for the "Email Booking Report" and also added a button to add "All Involved" to the email list making it very easy for you to then email the call sheet or booking confirmation directly from the Booking window within the application.



A Bit About Reports

Big Brother Is Watching. Check out the new "Day History Logger"

The report allows an Advanced User to generate a log report that shows actions that have occurred for an Object or User on a specific day.

Day History Log Report			
Print date 29-05-2015		Report Period 29-05-2015 < > 08-06-2015	
Anne Novak			
Event Date	By whom	Action	Log date & time
29-05-2015	Anne Novak	Created Request Vacation on Friday 29 May, All Day	27-05-2015 11:15
	Peter Moore	New event added on Friday 29 May, All Day for Vacation • Request note	27-05-2015 11:16
	Anne Novak	Connected (XML): Anne (127.0.0.1) / (farmerswife Web Client Server - 5.0) / Safari 8 (Mac)	29-05-2015 14:36
05-06-2015	Anne Novak	Schedule Changes Detected, An Email Was Sent	29-05-2015 17:00
	Peter Moore	Created Request Business Trip on Friday 05 June, 09:00 - 18:00	29-05-2015 14:36
	Peter Moore	New event added on Friday 05 June, 09:00 - 18:00 for Moondana Films Inc. • Silent Night • Select Booking Name	29-05-2015 14:38
08-06-2015	Anne Novak	Created Request Client Meeting on Monday 08 June, 09:15 - 13:15	29-05-2015 14:38
	Anne Novak	Deleted Request Client Meeting on Monday 08 June, 09:15 - 13:15	29-05-2015 14:39
	Peter Moore	New event added on Monday 08 June, 10:00 - 12:00 for Maya Pics • I Love Music (10" Trailer) • Edit	29-05-2015 14:47

For example, now you can see if a User was added to an event, removed from an event, added a request, removed a request, time reported a booking, was sent an email, logged in to the Web, iOS, or Mobile Web Client, etc.

For more information check out the "How To" on our Knowledge Base at support.farmerswife.com

Want to get a simple monthly report on your Resources? Try the new Month Schedule.

Print out the simple Month Schedule overview. With the second option in the Object Tree > Month Schedule on Project Booking Hours, you can also see the preliminary and confirmed hours per User.

The screenshot shows the Farmerswife software interface. The top navigation bar includes icons for Home, Long Form, Contacts, Projects, Invoice Creator, Invoice Manager, Invoice Payments, Object Manager, Dispatch, and Media. The sidebar on the left shows a tree view of objects, with 'Reports' expanded and 'Month Schedule' selected. The main area displays a calendar for April 2016 with various projects and resources. A pop-up window shows the 'April 2016' report for 'Final Cut Pro 1' and 'Final Cut Pro 2', listing hours for different users.

Want more? A few more nice little things...

Working with Binders? You'll like the new drag & drop support to re-order Binders in the Long Form > Projects tree.

Searching for the right Freelancer? In combination with the Object Custom fields setup on your Resources, you can filter in the Advanced Contact Search and then use "Add To Tree" and "Solo View In Tree" for the selected Contacts.

Working with sensitive Client Rate Information? We added a new feature called "Client Rate Permissions", that lets you restrict access to some Clients' Rate Cards and Rates for Advanced Users.

For more information, check out support.farmerswife.com and look for "Client Rate Permissions."